

ELIMINATOR[®]

LIGHTING



Decor MBSK

User Guide

©2019 **Eliminator Lighting** all rights reserved. Information, specifications, diagrams, images, and instructions herein are subject to change without notice. Eliminator logo and identifying product names and numbers herein are trademarks of Eliminator Lighting. Copyright protection claimed includes all forms and matters of copyrightable materials and information now allowed by statutory or judicial law or hereinafter granted. Product names used in this document may be trademarks or registered trademarks of their respective companies and are hereby acknowledged. All non-Eliminator brands and product names are trademarks or registered trademarks of their respective companies.

Eliminator Lighting and all affiliated companies hereby disclaim any and all liabilities for property, equipment, building, and electrical damages, injuries to any persons, and direct or indirect economic loss associated with the use or reliance of any information contained within this document, and/or as a result of the improper, unsafe, insufficient and negligent assembly, installation, rigging, and operation of this product.

Eliminator Lighting USA

6122 S. Eastern Ave. | Los Angeles, CA 90040 USA

Tel: (323) 948-0480 | Fax: 888-287-5224 | www.eliminatorlighting.com | info@eliminatorlighting.com

DOCUMENT VERSION

An updated version of this document may be available online.

Please check www.eliminatorlighting.com for the latest revision/update of this document before beginning installation and use.

Date	Document Version	DMX Channels	Notes
10/11/2019	1	None	Initial release.

CONTENTS

General Information	4
Limited Warranty (USA Only)	5
Safety Guidelines	6
Maintenance Guidelines	7
Overview	8
Installation Guidelines	10
Trouble Shooting FAQ's Optional Accessories	16
Technical Specifications and Dimensions	17

GENERAL INFORMATION

INTRODUCTION

Please read and understand all instructions in this manual carefully and thoroughly before attempting to operate this product. These instructions contain important safety and use information.

UNPACKING: This product has been thoroughly tested and has been shipped in perfect condition. Carefully check the shipping carton for damage that may have occurred during shipping. If the carton appears to be damaged, carefully inspect your product for damage and be sure all accessories necessary to assemble the product have arrived intact. In the event damage has been found or parts are missing, please contact our customer support team for further instructions.

Please do not return this product to your dealer without first contacting customer support at the number listed below. Please do not discard the shipping carton in the trash. Please recycle whenever possible.

CUSTOMER SUPPORT

Tel: (323) 213-4592 | Fax: 888-287-5224 | www.eliminatorlighting.com | support@eliminatorlighting.com

WARRANTY RETURNS

All returned service items whether under warranty or not, must be freight pre-paid and accompany a return authorization (R.A.) number. The R.A. number must be clearly written on the outside of the return package. A brief description of the problem as well as the R.A. number must also be written down on a piece of paper and included in the shipping container. If the unit is under warranty, you must provide a copy of your proof of purchase invoice. Items returned without an R.A. number clearly marked on the outside of the package will be refused and returned at customer's expense. You may obtain an R.A. number by contacting customer support.

ELIMINATOR LIMITED WARRANTY (USA)

A. Eliminator Lighting, an ADJ Products, LLC brand, hereby warrants, to the original purchaser, ADJ Products, LLC products to be free of manufacturing defects in material and workmanship for a prescribed period from the date of purchase (see specific warranty period on reverse). This warranty shall be valid only if the product is purchased within the United States of America, including possessions and territories. It is the owner's responsibility to establish the date and place of purchase by acceptable evidence, at the time service is sought.

B. For warranty service you must obtain a Return Authorization number (RA#) before sending back the product, please contact ADJ Products, LLC Service Department at 800-322-6337. Send the product only to the ADJ Products, LLC factory. All shipping charges must be pre-paid. If the requested repairs or service (including parts replacement) are within the terms of this warranty, ADJ Products, LLC will pay return shipping charges only to a designated point within the United States. If the entire instrument is sent, it must be shipped in its original package. No accessories should be shipped with the product. If any accessories are shipped with the product, ADJ Products, LLC shall have no liability whatsoever for loss of or damage to any such accessories, or for the safe return thereof.

C. This warranty is void if the serial number has been altered or removed; if the product is modified in any manner which ADJ Products, LLC concludes, after inspection, affects the reliability of the product; if the product has been repaired or serviced by anyone other than the ADJ Products, LLC factory unless prior written authorization was issued to purchaser by ADJ Products, LLC; if the product is damaged because not properly maintained as set forth in the instruction manual.

D. This is not a service contract, and this warranty does not include maintenance, cleaning or periodic check-up. During the period specified above, ADJ Products, LLC will replace defective parts at its expense with new or refurbished parts, and will absorb all expenses for warranty service and repair labor by reason of defects in material or workmanship. The sole responsibility of ADJ Products, LLC under this warranty shall be limited to the repair of the product, or replacement thereof, including parts, at the sole discretion of ADJ Products, LLC. All products covered by this warranty were manufactured after August 15, 2012, and bear identifying marks to that effect.

E. ADJ Products, LLC reserves the right to make changes in design and/or improvements upon its products without any obligation to include these changes in any products theretofore manufactured. No warranty, whether expressed or implied, is given or made with respect to any accessory supplied with products described above. Except to the extent prohibited by applicable law, all implied warranties made by ADJ Products, LLC in connection with this product, including warranties of merchantability or fitness, are limited in duration to the warranty period set forth above. And no warranties, whether expressed or implied, including warranties of merchantability or fitness, shall apply to this product after said period has expired. The consumer's and/or Dealer's sole remedy shall be such repair or replacement as is expressly provided above; and under no circumstances shall ADJ Products, LLC be liable for any loss or damage, direct or consequential, arising out of the use of, or inability to use, this product.

This warranty is the only written warranty applicable to Eliminator Lighting, an ADJ Products, LLC brand, and supersedes all prior warranties and written descriptions of warranty terms and conditions heretofore published.

MANUFACTURER'S LIMITED WARRANTY PERIODS:

All Eliminator Lighting products (except laser diodes) = 1-year (365 days) Limited Warranty (Such as: Special Effect Lighting, Intelligent Lighting, UV lighting, Strobes, Fog Machines, Bubble Machines, Mirror Balls, Par Cans, Trussing, Lighting Stands etc., excluding lamps)

Laser Products = 1 Year (365 Days) Limited Warranty (excluding laser diodes which have a 6 month limited warranty)

Batteries = 180 Day Limited Warranty

Please click here to register your Eliminator product: <https://www.adj.com/portal/user/register/>

SAFETY GUIDELINES

To guarantee a smooth operation, it is important to follow all instructions and guidelines in this manual. **ELIMINATOR LIGHTING** is not responsible for injury and/or damages resulting from the misuse of these devices due to the disregard of the information printed in this manual. Only qualified and/or certified personnel should perform installation of these devices and only the original rigging parts included with these devices should be used for installation. Any modifications to these devices and/or the included mounting hardware will void the original manufacturer's warranty and increase the risk of damage and/or personal injury.



THERE ARE NO USER SERVICEABLE PARTS INSIDE THIS DEVICE. DO NOT ATTEMPT ANY REPAIRS YOURSELF; DOING SO WILL VOID YOUR MANUFACTURER'S WARRANTY. DAMAGES RESULTING FROM MODIFICATIONS TO THIS DEVICE AND/OR THE DISREGARD OF SAFETY INSTRUCTIONS AND GUIDELINES IN THIS MANUAL VOID THE MANUFACTURER'S WARRANTY AND ARE NOT SUBJECT TO ANY WARRANTY CLAIMS AND/OR REPAIRS.



**ALWAYS DISCONNECT THE MAIN POWER BEFORE PERFORMING REPAIRS!
KEEP FLAMMABLE MATERIALS AWAY FROM THESE DEVICES!**



**INDOOR / DRY LOCATIONS USE ONLY!
DO NOT EXPOSE DEVICES TO RAIN AND/OR MOISTURE!**



**DO NOT SET UP OR PLACE THE STAND ON SOFT OR UNEVEN SURFACES!
STAND MUST BE ORIENTED IN A VERTICAL POSITION!
DO NOT EXCEED THE MAXIMUM LOAD WEIGHT OF 22 LBS (10 KG)!
DO NOT MOVE WHEN LOADED!**



NEVER INSTALL A MIRROR BALL THAT EXCEEDS THE MAXIMUM ALLOWABLE DIAMETER OF 19.7 INCHES (500 MM) AS SHOWN IN THE DIAGRAM BELOW.



ONLY use the original packaging and materials to transport for service.

ALWAYS disassemble before performing any cleaning.

Power cords should be routed safely and securely so they are not likely to get pinched.

Only use recommended rigging hardware as described in this guide.

MAINTENANCE GUIDELINES

SCRIM CLEANING

The fire retardant coating on the fabric of the scrim is a topical chemical treatment. **The flame resistance of the treated fabric has an approximate life span of up to one year. This life span decreases with repeated use and is reduced even further by conventional cleaning methods.** Chemically treated fabrics must be dry-cleaned with a non-liquid cleaning agent. To maintain the fire retardant coating, a suitable treatment or spray is available online or from your local supplier. Please seek Fire Marshal clearance for fire retardant application and jurisdiction.

MAINTENANCE

Regular inspections are recommended to ensure proper function and extended life. There are no user serviceable parts inside these devices; please refer all other service issues to Eliminator Lighting. Should you need any spare parts, please order genuine parts from Eliminator Lighting.

Please refer to the following points during routine inspections:

- A detailed review should be performed by an approved electrical engineer every three months, to make sure the circuit contacts are in good condition and prevent overheating.
- Be sure all screws and fasteners are securely tightened at all times. Loose screws may fall out during normal operation resulting in damage or injury as larger parts could fall.
- Check for any deformations on the unit. Deformations could allow for dust to enter into the devices, or cause the devices to fall and seriously injure a person(s).
- Electric power supply cables must not show any damage, material fatigue or sediments.

OVERVIEW

INCLUDED ITEMS



Bracket Arm with Integrated Motor (1)



Tripod Stand (1)



Telescoping Rod (1)



Scrim Clamp (1)



Fire-Retardant Scrim (1)

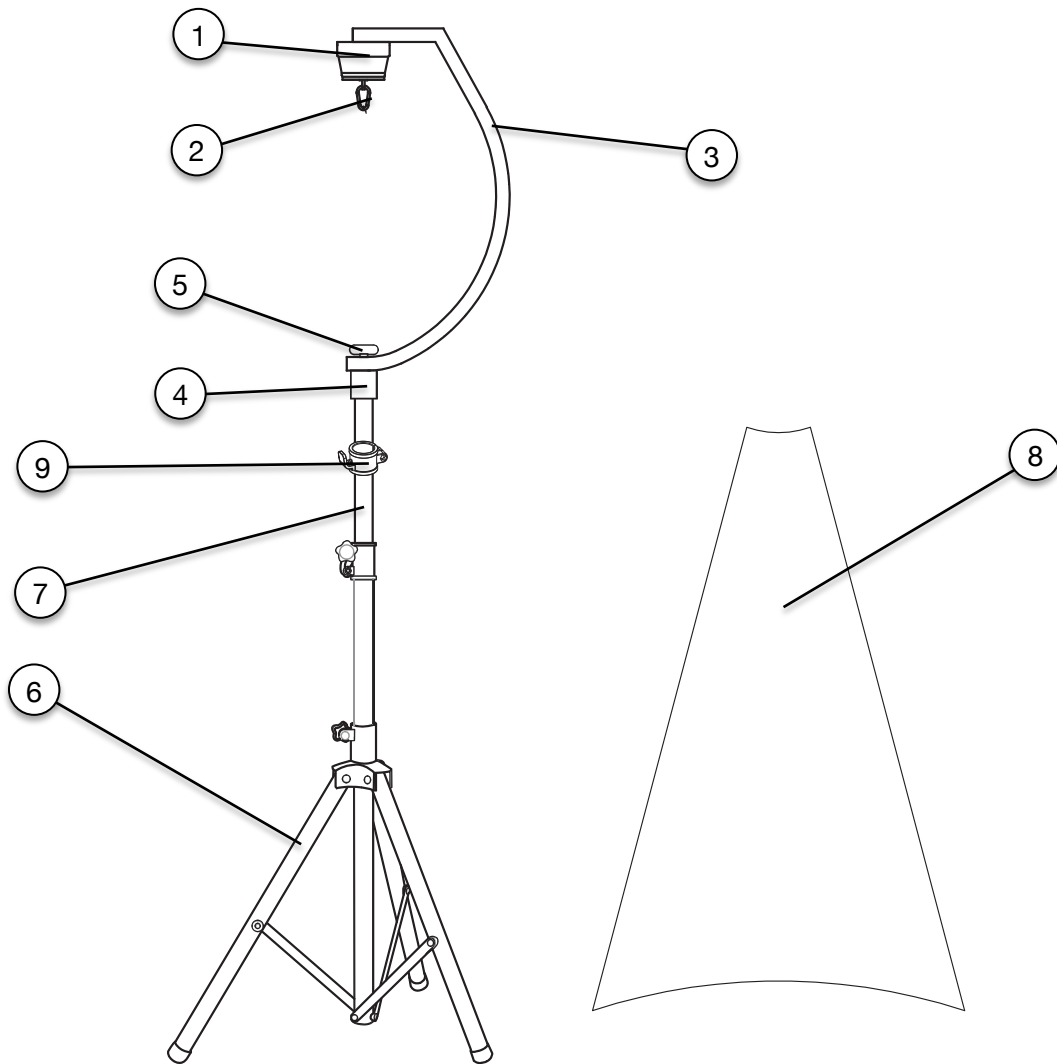


Stand Adaptor (1)



Pin & Dowel Set (1)

OVERVIEW



1. Integrated Motor

2. Mirror Ball Attachment Eyelet

3. Bracket Arm

4. Stand Adaptor

5. Adaptor Tightening Knob

6. Tripod Stand

7. Telescoping Rod

8. Fire-Retardant Scrim

9. Scrim Clamp

INSTALLATION GUIDELINES



FLAMMABLE MATERIAL WARNING

Keep devices minimum 5.0 feet (1.5m) away from flammable materials and/or pyrotechnics.



ELECTRICAL CONNECTIONS

A qualified electrician should be used for all electrical connections and/or installations.



DO NOT INSTALL THE DEVICES IF YOU ARE NOT QUALIFIED TO DO SO!

FOR ADDED PROTECTION, PLACE IN AREAS OUTSIDE WALKING PATHS, SEATING AREAS, OR AREAS WHERE UNAUTHORIZED PERSONNEL CAN REACH THE STAND OR ANY EQUIPMENT MOUNTED ON IT.

DO NOT EXCEED THE MAXIMUM LOAD WEIGHT OF 22 LBS (10 KG).

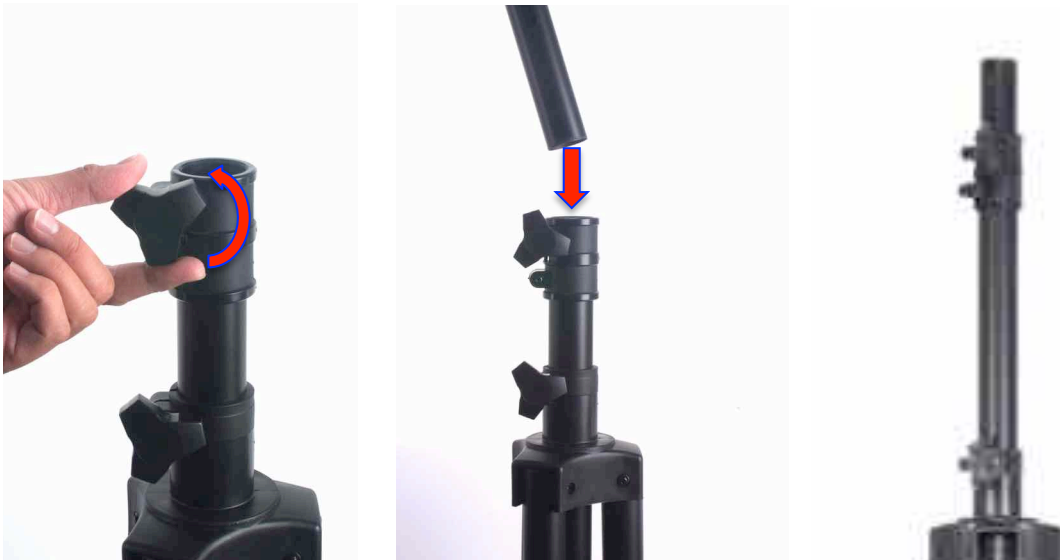
DO NOT EXCEED A MAXIMUM MIRROR BALL DIAMETER OF 19.7 INCHES (500 MM).

DEVICES MUST ALL BE INSTALLED FOLLOWING ALL LOCAL, NATIONAL, AND COUNTRY COMMERCIAL ELECTRICAL AND CONSTRUCTION CODES AND REGULATIONS.

INSTALLATION GUIDELINES



1. Loosen the lower clamp on the tripod, located just above the hinge of the tripod legs. Deploy the tripod stand by pulling the legs apart from each other, or by pushing downward on the hinge of the tripod legs. Re-tighten the lower clamp to lock the tripod legs in place.

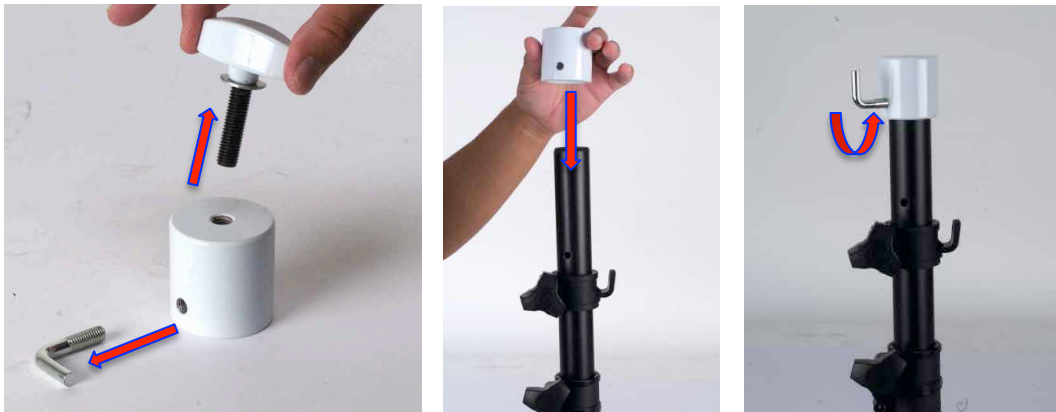


2. Loosen the upper clamp on the tripod and insert the telescoping rod. Rather than fully inserting the telescoping rod, leave a small segment of the top of the rod exposed, as this provides enough space to install both the scrim clamp and the stand adaptor. Re-tighten the clamp to lock the telescoping rod in place.

INSTALLATION GUIDELINES



3. Slip the scrim clamp onto the telescoping rod, making sure the clamp is oriented with the hook facing upward. Tighten the clamp to secure it in the desired position. Leave enough space above the scrim clamp to install the stand adaptor at the top of the telescoping rod, and do not cover the holes on the telescoping rod.



4. Unscrew both the chrome bolt and the adjustment knob from the stand adaptor, being careful not to lose the washer that has been inserted onto the adjustment knob. Fit the stand adaptor onto the top of the telescoping rod, and reinstall and tighten the chrome bolt to secure the adaptor in place.

INSTALLATION GUIDELINES



5. Hold the bracket arm vertically with the motor side up. Find the mounting hole on the lower end of the bracket arm, and align it with the hole on the stand adaptor. With the washer still inserted onto the adjustment knob, thread the adjustment knob through the mounting hole in the bracket arm and tighten. The washer should be held securely in place between the knob and the bracket arm.



6. Hang your mirror ball (not included) from the mirror ball attachment eyelet. If your mirror ball features multiple attachment eyelets, make sure that the primary attachment point is the eyelet located at the center of the top of the ball, as this will ensure smooth, even rotation. Attach the mirror ball attachment eyelet on the bracket arm to the secondary attachment eyelet on your mirror ball using an appropriate length of safety cable (not included).



The bracket arm can safely accommodate mirror balls up to 19.7 inches (500 mm) in diameter and weighing up to 22 lbs (10 kg).

INSTALLATION GUIDELINES



7. Find the slit in one corner of the fire-retardant scrim. Insert the hook of the scrim clamp through this slit, then tuck each of the remaining corners under the legs of the tripod stand.



8. Loosen the upper tripod clamp and adjust the telescoping arm to the desired height. This will also pull the scrim tight. Be sure to hold the tripod firmly against the ground while adjusting the telescoping rod, in order to keep the corners of the scrim pinned under the tripod legs. Tighten the upper tripod clamp again to lock the telescoping rod in place.

INSTALLATION GUIDELINES



9. Insert the dowel into the lowest available hole in the telescoping rod, then lock the dowel in place by inserting the pin into the pinhole at the end of the dowel. Please note that in the picture above, the scrim has been removed for the sake of clarity.

Lastly, connect the stand to power and switch the device on.

INSTALLATION COMPLETE!



Note: Mirror ball not included.

TROUBLE SHOOTING TIPS

The mirror ball motor does not turn ON.

1. Confirm the AC power cord is not damaged or cut.
2. Check if circuit breaker that controls the AC outlet that the device is plugged into is not tripped.
3. Confirm the power connection is not loose.
4. If none of these solutions work, please contact Eliminator Lighting Customer Service.

The stand does not fully collapse or extend to full height.

Check that the upper tripod clamp has been loosened sufficiently to permit the telescoping rod to slide up and down. Check that the pin and dowel have been removed prior to attempting height adjustment.

The pin and dowel do not fit into the holes in the telescoping rod.

Make sure that the holes in the telescoping rod are not blocked or obscured, and check that the dowel and pin have not been bent or otherwise deformed. If they have been damaged, please contact Eliminator Lighting for replacement parts.

FREQUENTLY ASKED QUESTIONS

Listed below are a few answers to common questions users may have.

1. Where is the power switch located?

The power switch is built into the power cord, and is located near the plug end of the cord.

2. What is the largest mirror ball that this stand can safely carry?

The stand can accommodate mirror balls measuring up to 19.7 inches (500 mm) in diameter with a mass of up to 22 lbs (10 kg).

3. What is the maximum height of the stand?

The maximum height is 8.6 feet (2.6 m).

4. At what speed does the motor rotate?

The integrated motor included with this unit turns at a speed of just over 1 RPM.

OPTIONAL ACCESSORIES

Order Code	Description
DECOR MBSK BAG	Carry bag to accommodate tripod stand, bracket arm, and scrim.
EM8	8" Mirror Ball
EM12	12" Mirror Ball
EM16	16" Mirror Ball
EM20	20" Mirror Ball

Accessories available from ELIMINATOR LIGHTING. www.eliminatorlighting.com

TECHNICAL SPECIFICATIONS

Model: Decor MBSK

Working Position: Upright only

Power Consumption: 3.5 W

Voltage: 120V, 60Hz

Rotation Speed: 1.3 RPM

Dimensions (LxWxH):

- **Tripod Height:** 44.3" to 73.4" (1125 mm to 1865 mm)
- **Tripod Width:** 4.3" to 33.5" (109 mm to 851 mm)
- **Overall Height:** 74.0" to 103.1" (1880 mm to 2620 mm)

Tripod Footprint: 10.8 sq. ft. (1.0 sq. meter)

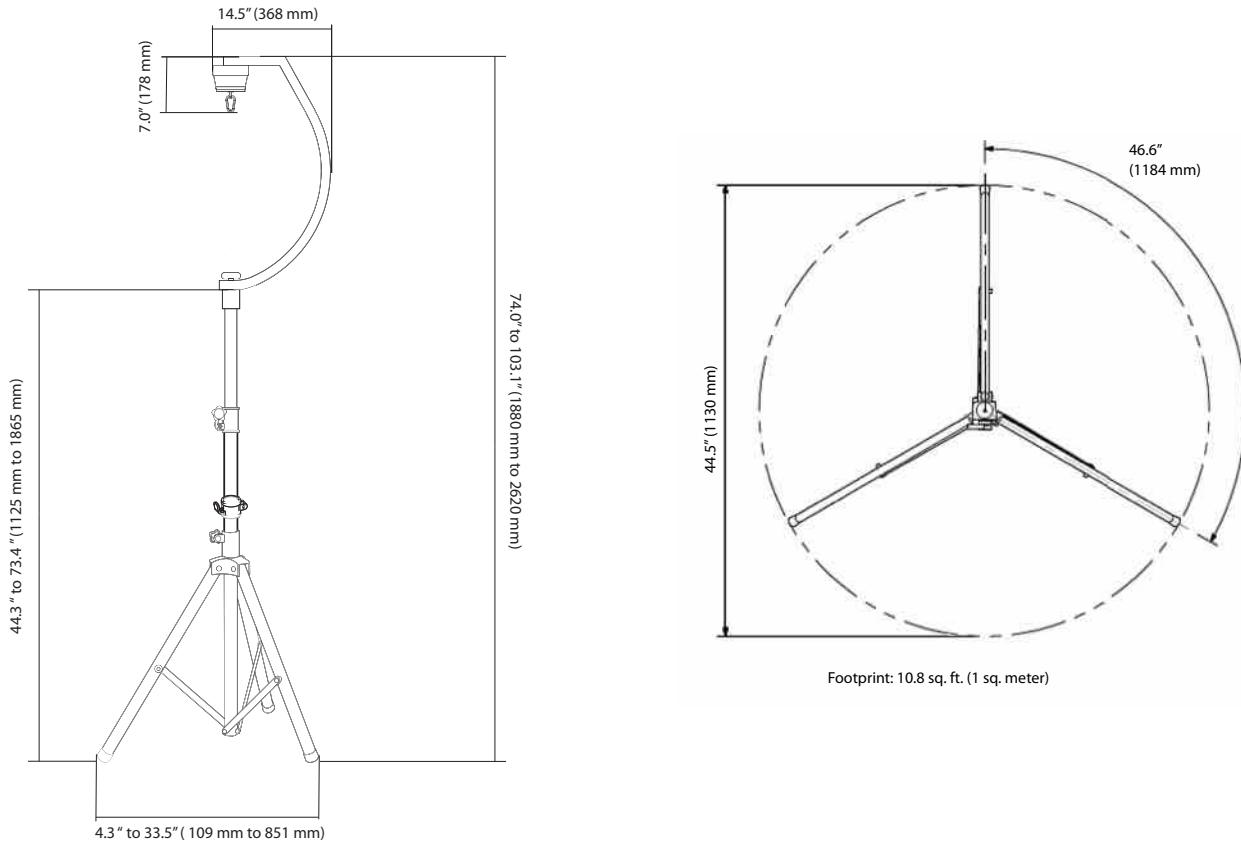
Maximum Load: 22 lbs (10 kg)

Maximum Equipment Diameter: 19.7" (500 mm)

Weight: 11.8 lbs (5.4 kg)

Specifications subject to change without any prior written notice.

DIMENSIONS



NOTE: Dimensions not to scale.

